

CHANGES TO FREIGHT CHECK IN

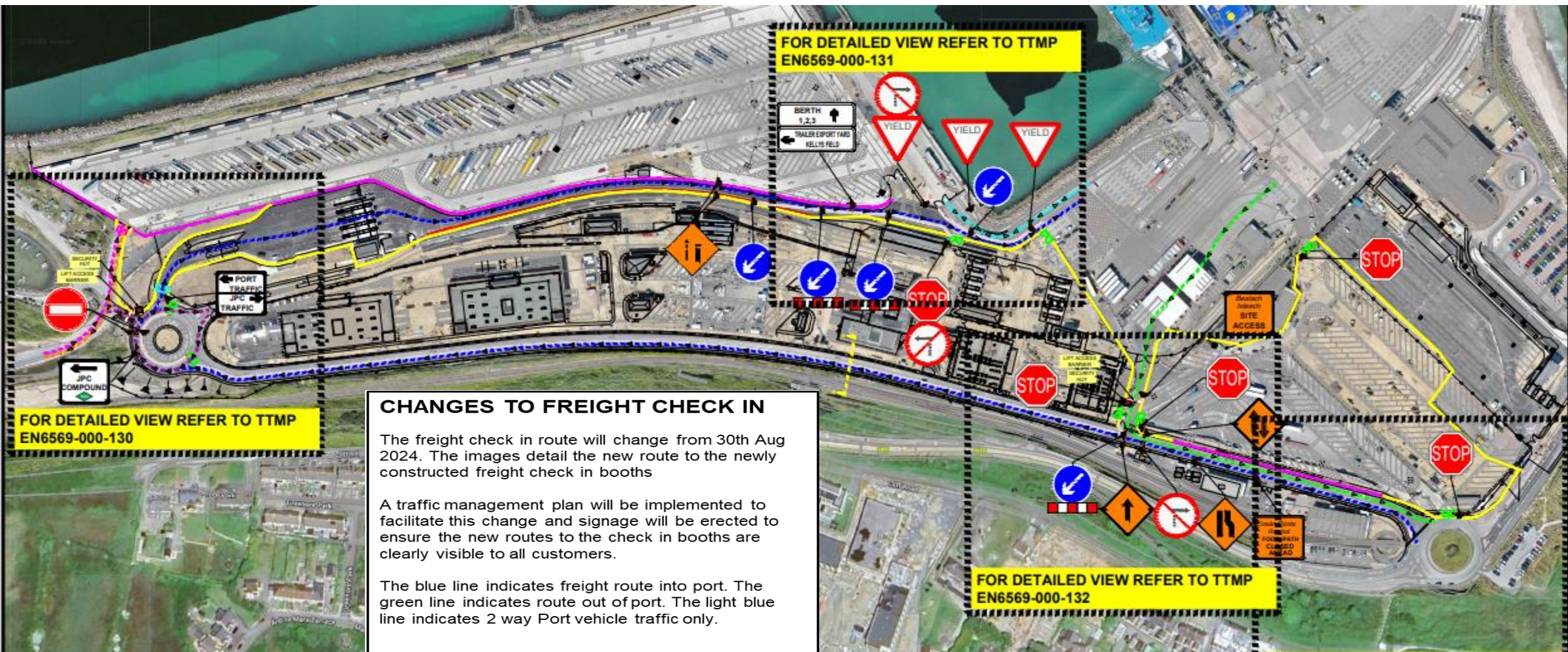
The freight check in route will change from 30th Aug 2024. The image below details the new route to the newly constructed freight check in booths

A traffic management plan will be implemented to facilitate this change and signage will be erected to ensure the new routes to the check in booths are clearly visible to all customers.

The blue indicates freight route into port. The green line indicates route out of port. The light blue line indicates segregated port Tug traffic.

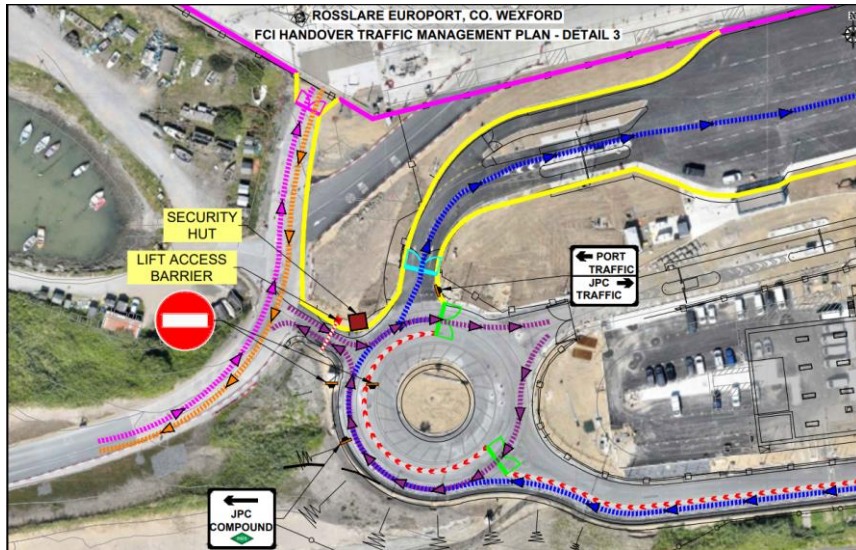


Traffic Routing Plan

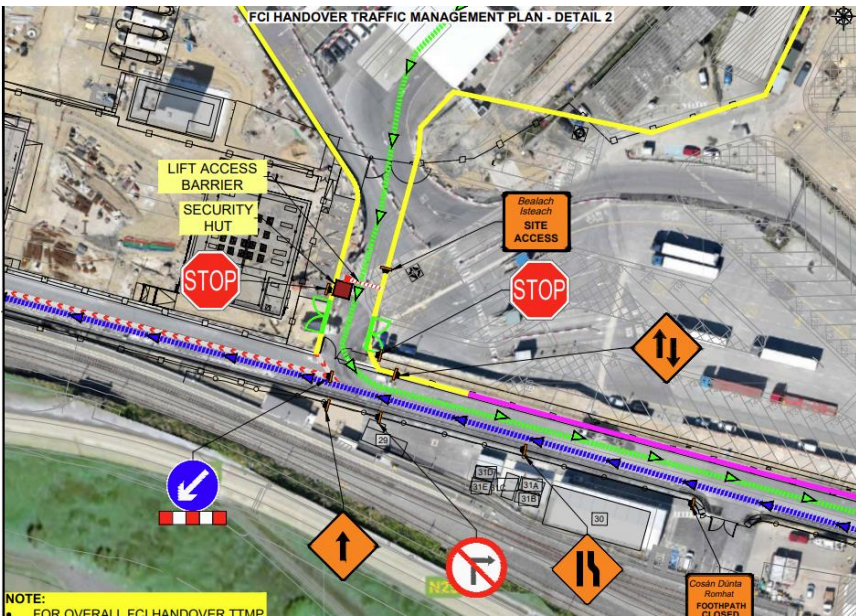


MASTERPLAN UPDATE 12

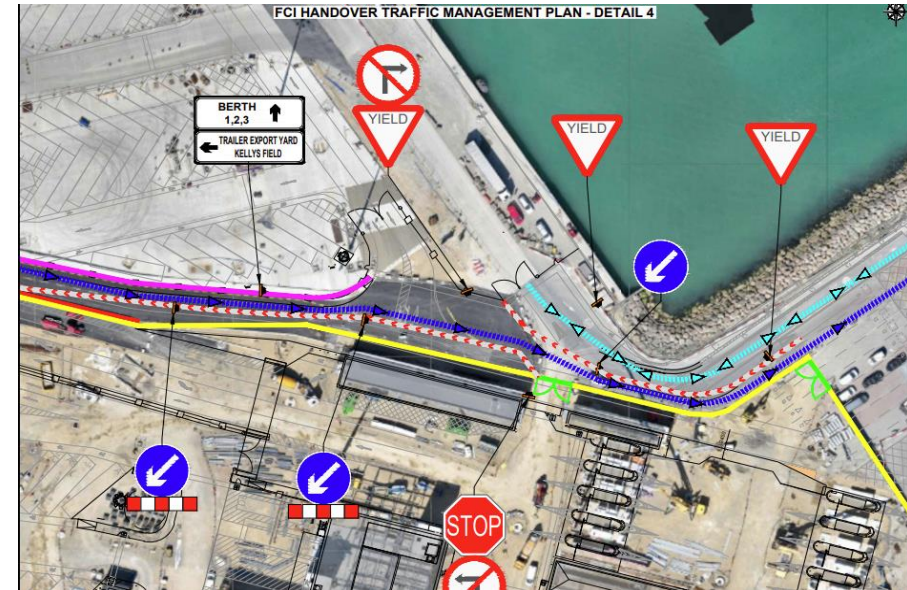
3



2



4



1

